

Proceedings of the 1st Joint Symposium on the Natural History and Geology of The Bahamas

June 12-16, 2015



Conference Organizer:

Thomas A. Rothfus

Content Editors:

Carol L. Landry

Dan S. Kjar

Production Editors:

Lee J. Florea

Carol L. Landry

Gerace Research Centre

San Salvador, Bahamas

2017

Copyright 2017, Gerace Research Centre

All rights reserved. No part of this work may be reproduced or transmitted in any form by any means, electronic or mechanical, including photocopying, recording, or any data storage or retrieval system without the express written permission of the Gerace Research Centre.

ISBN: 978-0-935909-40-1

Cover image - Patch reef near the wall off Grotto Beach (photo by Lee Florea).

A partial trash history of the San Salvador (Watling's Island Imperial) Lighthouse

John Winter¹ and Susan Rice²

¹Department of Biology, Chemistry, and Environmental Studies, Molloy College, Rockville Centre, NY

²Caribbean Volunteers Expeditions, Corning, NY

1. Abstract

A one-week project was to excavate a trash heap outside the western gate of the Imperial Lighthouse compound on San Salvador Island. The trash heap lay to the south of the Government path that connected the Lighthouse to the boat house, which was built on the northeastern arm of San Salvador's Great Lake. The trash heap is apparently the result of a leveling off of the surface so that Survey marker #15 could be built. The trash heap was composed of glass and ceramic items. Many of the broken items were reconstructed in the laboratory. The most abundant source of these items is related to the dark green glass case bottles that used to contain liqueur.

2. Introduction

On the 10th October 1884 by authorization of the board of trade, a sum of 40 pounds was to be sent to Watling's Island for the purpose of purchasing a piece of land for the building of the new Watling's Island Imperial Lighthouse. The purchase money left Nassau on the 14 November 1884. The land was known as Dixon's Hill, named after the original land grant owner. The property was currently under the ownership of Mr. Shylock Strachan (Board of Trade 1884).

Initial work began around November 4, 1884, with the construction of 3 store houses, a men's barracks, a building for the inspector, foremen and a kitchen. The lumber for these buildings was imported from the southern states of America. Lime and sand were to be quarried at Watling's Island. A road was to be built from Graham's Harbour to the foot of the hill below where the Imperial Lighthouse was to be constructed. Store houses were erected

in Cockburn Town, on the western side of the island by a deep-water portage, and Graham's Harbour, on the north end of the island, a shallow water portage. Two serviceable boats were built to hold 25 barrels or 200 pounds, one to be kept at Riding Rocks and the other to be kept at Graham's Harbour.

In early June 1885, the Inspector of Lighthouses, Mr. Savage, on behalf of the Board of Trade, hired additional workers to work on Watling's Island Lighthouse. These additional workmen were recruited in Nassau, New Providence. They were contracted to work for six months and nine hours of work per day, with Sunday off. In an emergency, all workers were deemed available to work. Each man was given a daily ratio of food; with the foremen being paid 15 pounds per month and the laborers being paid 3 pounds (Board of Trade 1885).

The Lighthouse was operational in 1887. It continues to this day to provide night illumination, some 19 miles out, so that ships will not run onto the coral reefs around the island.

3. Excavation

A one week excavation was undertaken in March 2008, at a pile of trash outside the western gate of the lighthouse enclosure (Figures 1-2). Trash had been deposited outside the lighthouse enclosure over the years. This trash pile was chosen because it was easily accessible. The purpose of the excavation was to see what type of trash was disposed of by the inhabitants of the lighthouse.

The western gate that leaves the lighthouse was the route used to carry supplies to the inland lake boathouse. This downhill trek crossed over a small road that was constructed

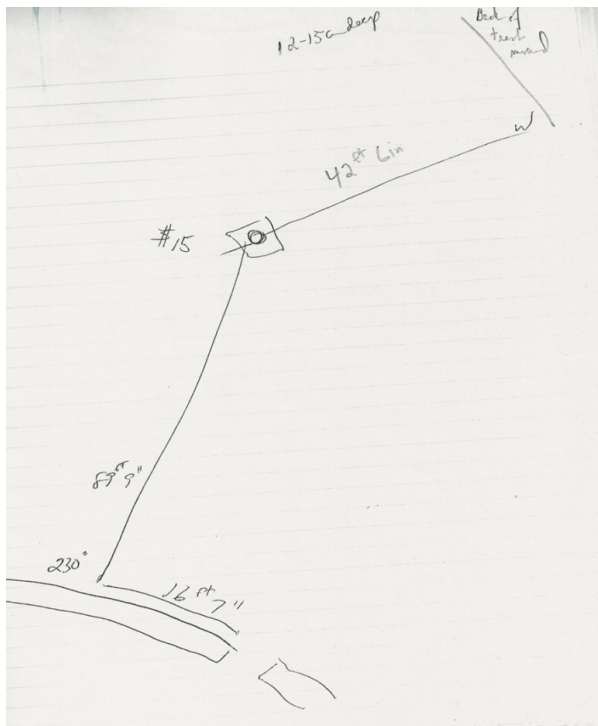


Figure 1. Location outside western gate for excavation.

over a small hypersaline pond. The boathouse was at the end of the trail. Boats from here could navigate to and from the Riding Rocks (Cockburn Town) storage buildings by way of the Great Lake. This was an alternate way to the lighthouse, if the main road was not being used.

In 1968, the Bahamas geodetic survey placed a marker outside the western gate, 16 feet 7 inches south along the western gate and then at a 230 degree bearing a distance of 89 feet 9 inches. The elevation is listed as 119.2 feet above sea level. In order to create a level placement for the marker, an area of trash was cleared out. This leveling pushed the back edge of the trash downhill to rest 42 feet 6 inches from where the marker was built. The trash reached a depth of 22 cm at the back edge to 8 cm deep where the slope begins.

As the trash mound was not deposited in stratified layers, we laid out thirteen parallel rows, each with four squares. The squares



Figure 2. View of excavation from the top of the Lighthouse.

were 4 feet x 4 feet units. As there was much broken glass in the trash heap, we chose to pick the pieces by hand. We started at the downhill portion of the trash and worked our way towards the marker. The items were placed in containers marked for the units.

In the lab, we found that pieces from different units often matched up. The vast majority of items from the trash heap were dark green case bottle glass (Figure 3). Whole or fragmented dark green case bottles were also recovered from the pile. Many of the case bottles as well as the fragments of case bottles revealed the producer of the liqueur: Blankenheym & Nolet (Figure 4), V Hoytema & Co., and Louis Meeus. These were Dutch and Belgian gin companies that began in the second half of the nineteenth century. Different marks were imprinted in the bottom of the case bottles (Figure 5). These may be marks of the specific glass blower, glass company or distillery (Soetens 2001). There were also

fragmented and whole stoneware containers meant for ginger beer, stout or porter (Figure 6). The stonewares were made in Scotland.

There were numerous household ceramics fragments found in the trash, with only two half plates reconstructed. One plate bears the mark of the William Adams & Sons Ltd., Tunstall, England that dates to before 1891 (Perrott 1997). The other mark cannot be read. There were fragments of dishes and cups with blue transfer on white, as well as brown transfer on white and red transfer on white.

A dismantled Shipmate Foundry stove was found in the trash heap. This type of small stove is still being used today. It uses coal or wood for heating a room or cooking food. Insulation from the stove as well as floor bricks under the stove were in the heap.

Fragments of medicine, wine, and other types of bottles were found in the trash (Figure 7). Clay pipe stem fragments were recovered, revealing that someone was a pipe smoker.



Figure 3. Lab table with fragmented glass.



Figure 4. An example of a complete case bottle.

The remains of the West Indian top shell were recovered in the trash. This could have been a food resource or the intrusion of hermit crabs seeking out food. The most interesting finds were fourteen fragments of Lucayan Indian pottery.

4. Conclusions

The isolated trash heap that lies outside the southwestern gate of the Lighthouse enclosure gives us an insight into the lifestyle of the inhabitants. With many more trash heaps outside the enclosure, a more complete picture of the Lighthouse keepers might emerge in the future.

The finding of such a high concentration of dark green glass fragments of case bottles and repaired case bottles for Dutch gin might reveal a life of boredom. These case bottles were most likely delivered by mailboat from Nassau and brought in from England. The ceramics and stonewares were imported from England via Nassau. The finding of medicinal

bottles might indicate that the keepers treated themselves for health issues.

5. Acknowledgments

The authors would like to thank Don and Kathy Gerace for their support and friendship; Tom and Erin Rothfus of the GRC for their support and friendship. The Caribbean Volunteer Expeditions organization and the sixteen Elderhostel participants who helped carry out the research in the field and in the lab. The staff at the Gerace Research Centre gave us their wonderful hospitality and friendship. Lastly, but not the least, we are grateful to the Bahamas Lighthouse Service and the Antiquities Department.

6. References

- BOARD OF TRADE, 1884. Board of Trade 206, 1869-1885. Microfilm at the Department of Archives, 241-245. Nassau, The Bahamas.
- BOARD OF TRADE, 1885. Board of Trade 206/9, 1885-1907. Microfilm at the Department of Archives, 28-31 and 85. Nassau, The Bahamas.
- PERROTT, E.G. 1997. Pottery & Porcelain Marks. Gemini Publications Ltd., Bath, England.
- SOETENS, J. 2001. In Glas Verpakt / Packaged in Glass. De Bataafsche Leeuw, Amsterdam, Netherlands.

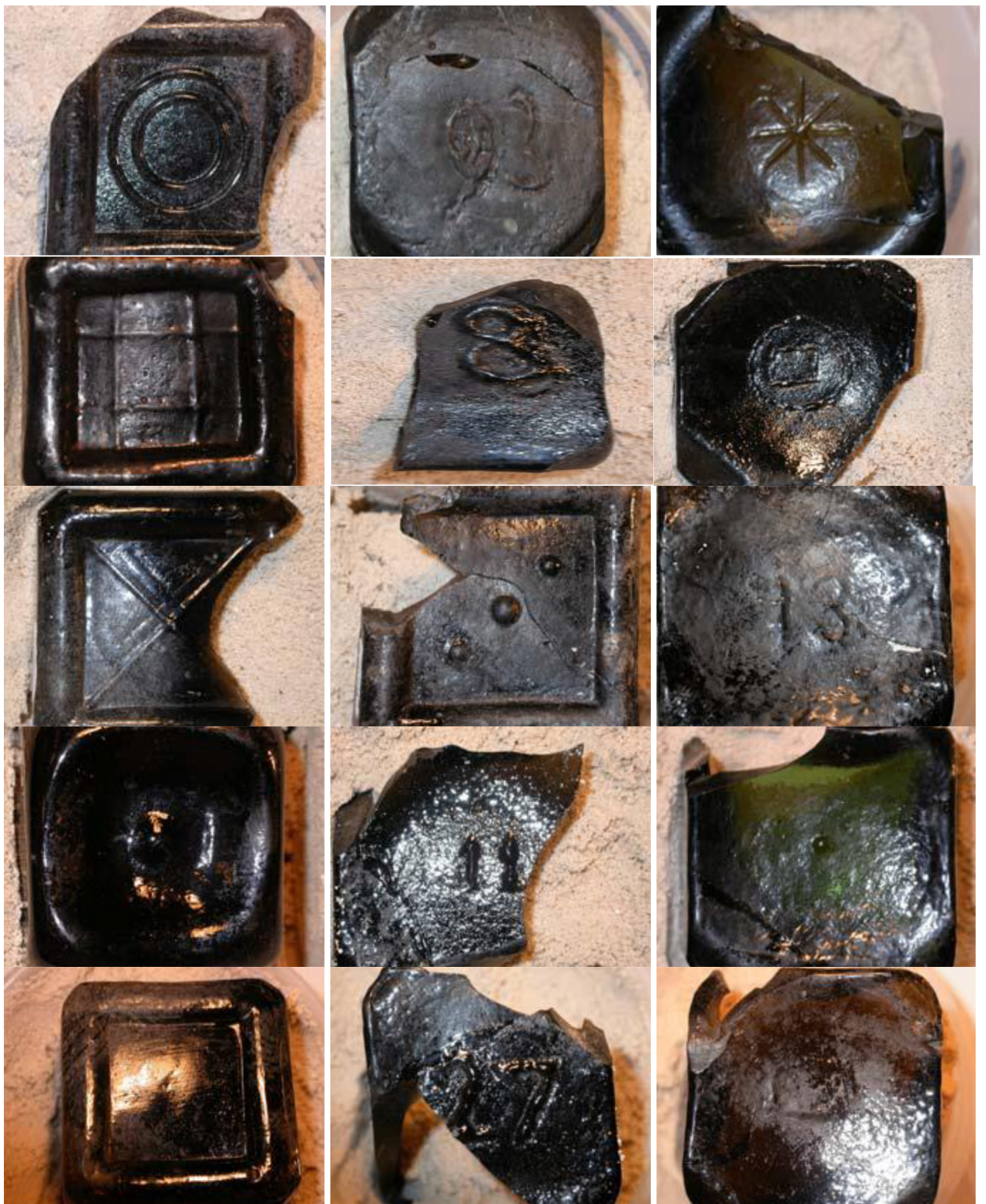


Figure 5. Examples of case bottle marks.



Figure 6. An example of a stoneware bottle.



Figure 7. Medicine bottle with spoon dose markings.

Table 1. Lighthouse artifact inventory.

Square	Section	Item	Description	2nd Description	Weight In Grams	Pieces	Notes
1	A	Ceramics	White pottery		41.5	2	
1	A	Ceramics	White potter with blue trim		17.2	2	Blue decoration on pottery
1	A	Ceramics	Stoneware Jug	Fragment	309.2		
1	A	Ceramics	Stoneware	Fragment	32.8		
1	A	Glass	Thin Clear Glass		372.1		Possible bottle and window pane
1	A	Glass	Green Glass	Bottle	58.5	1	Bottle Neck
1	A	Glass	Amber glass fragment		1.8	1	
1	A	Metal	Metal Fragments		26.2		
1	A	Metal	Metal Fragments		510		
1	A	Metal	Metal Fragments		326		
1	A	Metal	Metal Fragments		580		
1	A	Metal	Metal Fragments		560		
1	A	Stoneware	Stoneware	Bottle	63	1	Bottle Fragments
1	B	Brick	Red brick		270.5		
1	B	Brick	Red brick		669.2		
1	B	Ceramics	White Ceramics		10.6	1	Brown trim around rim
1	B	Ceramics	White Ceramics		5.2	1	Red trim around rim
1	B	Ceramics	White ceramics		1.7	1	Possible brown decoration
1	B	Clock	Clock		92.3		3 pieces, one part found in 2C
1	B	Copper	Fragments		10.5	2	
1	B	Glass	Clear Glass		90		
1	B	Glass	Clear Glass		321.3		Thick and thin fragments
1	B	Glass	Dark Green Glass		335	16	Fragments
1	B	Glass	Dark Green Glass		151	5	
1	B	Glass	Green Glass		164.7	10	Fragments
1	B	Glass	Green Glass	Bottle	24	1	Case Bottle top
1	B	Glass	Lavender Glass	Bottle	470	2	Vase/Bottle
1	B	Glass	Green Glass	Bottle	185.2	2	Bottles
1	B	Glass	Green glass bottle bottom	Bottle	72.2	1	Dot on bottom
1	B	Glass	Yellow glass		41	2	
1	B	Glass	Light Green Glass	Bottle	Over 610	1	Bottle, Whole, Kick Up Bottom
1	B	Metal	Metal Bucket		622.07	4	Some kind of Gas Can
1	B	Metal	Metal Fragments		12.5	2	
1	B	Metal	Metal Fragments		43		
1	B	Plastic	Amber plastic		7.1	1	
1	B	Pottery	Crock		134.3	1	Says "e Street / London E.C.
1	B	Pottery	Indian Pottery		33	1	Brown
1	B	Shell	Shells		64.5	1	Indian Top Shell
1	B	Shell	Shells	Fragment	67.4	1	
1	C	Ceramics	Tea cup		23.5	2	Tea cup with green and blue decoration
1	C	Ceramics	White pottery with blue decoration		3	1	Blue decoration on pottery
1	C	Glass	Clear Glass		228.9		
1	C	Glass	Green Glass		194.9	15	
1	C	Glass	Green Glass	Bottle	18	1	Bottle, label juice
1	C	Glass	Green Glass		77	15	Fragments
1	C	Glass	Green Glass	Bottle	59.7	1	Bottle Tops

Square	Section	Item	Description	2nd Description	Weight In Grams	Pieces	Notes
1	C	Glass	Green Glass	Bottle	413.6	1	Round Bottle Bottom
1	C	Glass	Green Glass	Bottle	333.5	2	Bottle Bottoms
1	C	Glass	Thick Clear Glass		635.8	11	
1	C	Glass	Thick Clear Glass		311.3		
1	C	Glass	Thin Clear Glass		244.1	26	
1	C	Glass	Blue/Green Glass	Bottle	380	1	Bottle, Possible Medicine Bottle, smooth inside top, possible glass stopper
1	C	Glass	Green glass bottle bottom	Bottle	236	1	Checkerboard on bottom
1	C	Glass	Milky glass		16	4	
1	C	Glass	Milky glass		8.7	1	
1	C	Glass	Clear thin glass		1.8	1	
1	C	Metal	Metal Fragments		124		
1	C	Pottery	Brown pottery		15.3	1	
1	C	Shell	Shells		127.56	8	Indian Top Shell
1	C	Stoneware	Stoneware	Bottle	31	3	Dark Brown Stoneware Bottle
1	D	Button	Button		0.4	1	
1	D	Ceramics	White Ceramics		25	7	
1	D	Ceramics	Blue Ceramics		3	2	
1	D	Ceramics	White Ceramics		4.2	1	Red and green trim
1	D	Ceramics	White Ceramics		2.9	1	Yellow stripes
1	D	Ceramics	White Ceramics		1.1	8	Textured pottery
1	D	Glass	Black Thick Glass		86	2	Fragments
1	D	Glass	Brown Glass	Bottle	67.5	7	Bottle pieces
1	D	Glass	Green Glass	Bottle	128	14	possible case gin bottle
1	D	Glass	Thick Clear Glass		149.7		
1	D	Glass	Thin Clear Glass		54.3	11	
1	D	Glass	Thin Clear Glass		91.9		
1	D	Glass	Green Glass		164.9	9	
1	D	Glass	Thick Green Glass		2.9	1	
1	D	Glass	Blue Glass	Bottle	90.3	1	Bottle Says "Not Te Be Taken"
1	D	Glass	Green Glass		423.3	1	Whole bottle, concave bottom
1	D	Metal	Metal Fragments		283	138	
1	D	Metal	Grommets		2	11	Black and White Grommets
1	D	Pottery	Stoneware bottle	Bottle	519.5	1	Bottle - Stamp (patial) uchan 7 portabello - Completely white
1	D	Pottery	Brown pottery		11.5	1	
1	D	Screen	Fine mesh screen		2.9	5	
1	D	Shell	Shells		300	13	
1	D	Shell	Shells	Fragment	148	75	
1	D	Shell	Shells	Fragment	500	Many	
1	D	Shell	Shells	Fragment	500	Many	
1	D	Shell	Shells	Fragment	500	Many	
1	D	Shell	Shells	Fragment	500	Many	Indian Top Shell
1	D	Shoe Heel	Shoe Heel		41.9	1	
2	A	Brick	Black Brick		>610		
2	A	Glass	Clear Glass		15.6	1	
2	A	Glass	Lavander Glass	Bottle	31.3	1	could be part of vase/bottle in 1B

Square	Section	Item	Description	2nd Description	Weight In Grams	Pieces	Notes
2	A	Glass	Green glass		81.6	3	
2	A	Glass	Green Glass		403.9	1	Whole bottle, 2.5 on bottom
2	A	Glass	Green Glass		390	1	Whole bottle, X on bottom
2	A	Glass	Light Blue Glass		22.4	3	
2	A	Glass	Green Glass	Bottle	583	1	Bottle, Whole , Printed Blakenhym & Notel with script logo, square bottom with dot in center.
2	A	Metal	Metal Fragments		414		
2	B	Glass	Clear Glass	Bottle	196.3	5	Bottle and Neck
2	B	Glass	Blue/Green Glass	Bottle	430.5	3	Possible Wine Bottle
2	B	Glass	Thin Clear Glass	Lamp	99.7		Kerosene Lamp Shade
2	B	Glass	Green Glass		437.5	1	1333 on bottom, JL&C Coy on bottom
2	B	Glass	Blue/Green Glass	Bottle	88.4	2	Medicine Bottle
2	B	Glass	Lavander Glass	Bottle	70.5	1	Missing top, rectangle shape
2	B	Glass	Clear Glass		24	2	Bottle Neck, glass appears frosted
2	B	Metal	Metal Fragments		10.5		
2	C	Brick	Brick	Fragment	106.1	2	
2	C	Brick	Red brick		424.3		
2	C	Brick	Black floor house brick		>610		1/3 of a brick
2	C	Clock	Clock	Clock	See Notes		part of 1B clock
2	C	Glass	Lavander Glass	Bottle	84.5		Bottle Bottom
2	C	Glass	Thick White Glass		70.8	2	
2	C	Glass	Thin Clear Glass		30.5	6	
2	C	Glass	Green Glass		370.4	1	Bottle, Missing neck, C7, S22, UGB on bottom
2	C	Glass	Green Glass	Bottle	551	1	Bottle, Whole, Blakenhym & Notel in script, Curve at the top of script logo, key logo on side, square bottom
2	C	Glass	Clear Glass	Bottle	Over 610	1	Bottle, Whole, Gordon's Dry Gin, with stopper top
2	C	Metal	Metal Can		289.6		
2	C	Metal	Metal Fragments		438		
2	D	Button	White button		0.4	1	
2	D	Ceramics	White ceramics		38.5	19	
2	D	Ceramics	White ceramics		8.3	2	Coffee cup handle?
2	D	Ceramics	Blue ceramics		3.3	1	
2	D	Ceramics	White Ceramics		5.1	1	Brown Trim
2	D	Ceramics	White Ceramics		3.9	1	blue and yellow decorations
2	D	Ceramics	Blue ceramics		0.8	1	
2	D	Ceramics	White Ceramic		1.6	1	Blue decoration on pottery
2	D	Ceramics	White Ceramic		0.5	1	Red trim around rim
2	D	Ceramics	White Ceramic		1.4	1	Black decoration on pottery
2	D	Ceramics	white cermamic		2.7	1	Green trim around rim
2	D	Charcoal	Charcoal Fragments		27.4	many pieces	
2	D	Glass	Brown Glass	Bottle	20.5	4	Bottle
2	D	Glass	Clear Glass		354.2		Thick and thin fragments
2	D	Glass	Clear Glass		436.7		Thick and Thin Fragments
2	D	Glass	Clear Glass		498.5		Fragments

Square	Section	Item	Description	2nd Description	Weight In Grams	Pieces	Notes
2	D	Glass	Clear Glass		367		
2	D	Glass	Clear Glass		43.8		Fragments
2	D	Glass	Green Glass		395.7	1	Whole bottle
2	D	Glass	Green Glass		405.1	1	Bottle, Missing neck
2	D	Glass	Light Green Glass		185.5	13	Fragment
2	D	Glass	Light Blue/Green	Bottle	253.2	1	reconstructed bottom
2	D	Glass	Lavender glass		16	1	
2	D	Glass	Green Glass		407.3	16	Bottle Fragment
2	D	Glass	Green Glass	Bottle	165.8		Bottle Bottom, FCC on bottom
2	D	Glass	Green Glass	Bottle	324.8		bottle
2	D	Metal	Stove		See Notes	3	Greater then 610 Grams, Shipmate Foundry Co, Oxford
2	D	Metal	Meat Grinder		See Notes		Greater then 610 Grams
2	D	Metal	Metal Fragments		80.2		
2	D	Metal	Metal Fragments		191.2		Fragments including nails
2	D	Metal	Metal Fragments		524		
2	D	Pipe	Pipe Stems		5.5	4	Fragment
2	D	Shell	Shells	Fragment	255	Many	Indian Top Shell
2	D	Shell	Shells	Fragment	15.5	6	
2	D	Unknown	Unknown	Unknown	10	1	
2	E	Metal	Stove		See Notes		See 2 D Stove Notes
3	A	Glass	Clear Glass		134.6		Thin Glass
3	A	Glass	Green Glass	Bottle	349	3	Case Bottle Bottom, partial written in print Blankenheym & Nolet, no mark on bottom
3	A	Glass	Green Glass	Bottle	546.5	1	Bottle, Whole, No Logo, 3 Circles on bottom
3	A	Glass	Green Glass	Fragment	57.4		
3	B	Ceramics	Glazed Ceramic	Fragment	5.5	1	Blue Decoration
3	B	Ceramics	Glazed Ceramic	Fragment	1.7	1	White Glaze
3	B	Glass	Clear Glass		50.3		
3	B	Glass	Green Glass		196	1	Fragment
3	B	Glass	Dark Green Glass	Bottle	Over 610 Grams	1	Bottle, Wine Bottle, Stopper Top with a place to tie cap on, round bottom
3	C	Brick	Red brick		159.4		Black out
3	C	Brick	Red brick	Half Brick	>610		Floor brick house
3	C	Ceramics	White pottery w/brown decoration		3.5	1	Brown decoration on pottery, two-sided
3	C	Ceramics	White pottery w/blue decoration		7.6	1	Blue decoration on pottery
3	C	Ceramics	Glazed Ceramic	Fragment	6.1	2	White Glaze
3	C	Glass	Lavender glass		10.2	1	Fragment
3	C	Metal	Metal Fragments		203.2		
3	C	Plaster	Plaster	Wall frag	348		
3	C	Plaster	Plaster	Fragment	303.2		
3	C	Pottery	Brown pottery		15.4	1	
3	D	Ceramics	White ceramics		20.8	3	
3	D	Glass	Thin Clear Glass		163.4		
3	D	Glass	Thin Clear Glass		2.2	1	Star desgin on glass, possible goblet
3	D	Glass	green Glass		78.8	4	Bottle - square

Square	Section	Item	Description	2nd Description	Weight In Grams	Pieces	Notes
3	D	Glass	Clear Glass		52.4	3	Bottle Fragment
3	D	Glass	Green Glass		95.8	4	Bottle - round
3	D	Glass	Green Glass	Bottle	Over 610 Grams	1	Large Bottle, Round Bottom, 91 marked on center of bottom, green color different then other green glass, size is greater then liter
3	D	Glass	Light Blue Glass	Bottle	130.4	1	Medicine Bottle, missing top
3	D	Glass	Blue/Green Glass	Bottle	65.6	1	Medicine Bottle, missing top, Teaspoon markings on side, Teaspoon written down middle of square medicine bottle, circle depression on bottom
3	D	Glass	Blue/Green Glass		242.2	2	
3	D	Metal	Metal Fragments		83.3		
4	A	Glass	Thin Clear Glass		49.3		
4	A	Glass	Clear Glass	Bottle		1	Small Bottle, whole, 2.5 fluid ounces written on bottle, reidue in bottom of bottle
4	A	Glass	Green Glass	Bottle	24.5	1	Bottle Neck and Shoulder
4	A	Stone	Flooring		208.7	1	Floor Brick From House
4	B	Ceramic	Glazed Ceramic	Fragment	0.04	1	Blue decoration with flower
4	B	Ceramics	Glazed Ceramic	Fragment	1.4	1	Green decoration painted on piece
4	B	Ceramics	Glazed Ceramic	Fragment	2.8	1	White Glaze
4	B	Glass	Thick Clear Glass	Bottle	129.4	1	Bottle
4	B	Glass	Light Blue Glass	Bottle	125	1	Top of bottle
4	B	Glass	Green Glass	Bottle	389.1	1	Whole bottle, 9 on bottom
4	B	Glass	Green Glass	Bottle	140.8	1	Bottle Side
4	B	Glass	Green Glass	Fragment	80		Miscellaneous
4	B	Metal	Metal Fragments		318.6		
4	B	Shell	Shells	Fragment	3.9	1	
4	B	Stoneware	Stoneware	Fragment	0.06	1	
4	C	Ceramics	White Ceramics		0.7	1	Brown trim around rim
4	C	Ceramics	Glazed Ceramic	Fragment	8	3	Blue Decoration
4	C	Ceramics	Glazed Ceramic	Fragment	18.5	9	White Glaze
4	C	Ceramics	Glazed Ceramic	Fragment	6.9	1	Brown Glazed
4	C	Ceramics	Glazed Ceramic	Fragment	1.6	1	Grey Glazed
4	C	Ceramics	Glazed Ceramic	Fragment	0.6	1	Blue Glazed
4	C	Glass	Green Glass	Bottle	397	1	Whole bottle, 7 on bottom
4	C	Glass	Green Glass	Bottle	54.2	8	Bottle Fragment
4	C	Metal	Metal Fragments		708.6		
4	C	Metal	Metal fragmemnt		3.8	1	
4	C	Pipe	Pipe Bowl		1.4	1	1/2 pipe bowl
4	D	Ceramics	White ceramics		157.2	15	
4	D	Ceramics	White ceramics		23.8	1	Piece has small handle
4	D	Ceramics	White ceramics		1.3	1	Green & brown trim
4	D	Ceramics	White pottery w/blue decoration		0.4	1	Blue decoration on pottery
4	D	Ceramics	White pottery w/blue decoration		0.5	1	Red trim around rim
4	D	Glass	Clear Glass		104.4		
4	D	Glass	Clear Glass	Bottle	32.7	1	Fragment

Square	Section	Item	Description	2nd Description	Weight In Grams	Pieces	Notes
4	D	Glass	Lavender glass	Bottle	24.7	2	
4	D	Glass	Green Glass	Fragment	3.5	2	
4	D	Metal	Metal Fragments		362.7		Fragments including nails
4	D	Plaster	Plaster	Floor frag	>610		
4	D	Pottery	Brown pottery		2.8	1	
4	D	Shell	Shells		93.7	1	Indian Top Shell
4	D	Stoneware	Glazed stoneware		653	15	pitcher pieces
4	D	Tiles	Buena 7		>610	1	Installation tiles for stove; whole piece
4	D	Tiles	Buena 7		435.3	3	Installation tiles for stove; partial pcs
5	A	Metal	Metal Fragments		8.8		
5	B	Glass	Green Glass	Bottle	1372	9	Case Bottle Bottoms
5	B	Glass	Green Glass	Bottle	183.9	4	Case Bottle Tops
5	B	Glass	Green Glass	Bottle	285.7	9	Case Bottle Tops
5	B	Glass	Green Glass	Bottle	327.5	41	Case Gin Bottle Fragments
5	B	Glass	Green Glass	Bottle	356.9	14	Round Bottle Bottom Fragments
5	B	Glass	Green Glass	Bottle	848	77	Case Bottle sides Fragments
5	B	Glass	White Glass		12.1	1	
5	B	Glass	Lavender Glass	Bottle	57.4	1	Small Bottle
5	B	Glass	Lavender glass		1.1	1	Fragment
5	B	Glass	Lavender Glass	Bottle	41.8	2	Small Bottle
5	B	Metal	Metal Fragments		64.2		
5	B	Pottery	Indian Pottery		11.1	3	
5	B	Shell	Chiton		1.2	1	
5	C	Ceramics	White ceramics with green trim		41.8	4	
5	C	Ceramics	Brown glaze		5	1	
5	C	Ceramics	White ceramics		2.5	3	
5	C	Ceramics	White ceramics		10.7	2	
5	C	Ceramics	White ceramics		4.1	2	Misc white pottery bits
5	C	Glass	Blue/Green Glass	Bottle	30.2		Small bottle, long neck
5	C	Glass	Clear Glass		295.3		
5	C	Glass	Green Glass	Bottle	2852.9		Case Bottle Sides
5	C	Glass	Green Glass	Bottle	2529		Case Bottle Sides
5	C	Glass	Green Glass	Bottle	2589		Case Bottle Sides
5	C	Glass	Green Glass	Bottle	64.5	3	Bottle Glass Label Sides Louis and
5	C	Glass	Green Glass	Bottle	947.5		Bottle Glass Label Sides B & N
5	C	Glass	Green Glass	Bottle	619.1		Bottle Glass Label Sides Hoy
5	C	Glass	Green Glass	Bottle	102.2	2	Bottle Glass Label Sides Hoy
5	C	Glass	Green Glass	Bottle	359.6		Bottle Glass Label Sides B & N, Fragments
5	C	Glass	Light Green Thick Glass	Bottle	533	22	Bottle pieces
5	C	Glass	Green glass bottle bottoms	Bottle	672.3	4	Dot on bottom
5	C	Glass	Green glass bottle bottoms	Bottle	247.4	3	"11" on bottom
5	C	Glass	Green Glass Bottle bottoms	Bottle	123.4	1	Dot on bottom

Square	Section	Item	Description	2nd Description	Weight In Grams	Pieces	Notes
5	C	Glass	Green glass bottle bottoms	Bottle	363.6	4	Has partial text "kenheym Nolet" (Blankenheym & Nolet)
5	C	Glass	Green glass bottle bottoms	Bottle	242.5	3	"03" on bottom
5	C	Glass	Green glass bottle bottoms	Bottle	112.4	3	Two concentric circles on bottom
5	C	Glass	Green glass bottle bottoms	Bottle	182	1	"13" on bottom
5	C	Glass	Green glass bottle bottoms	Bottle	115.1	2	No marks on bottom
5	C	Glass	Green glass bottle bottoms	Bottle	175.5	1	"21" on bottom
5	C	Glass	Green glass bottle bottoms	Bottle	193.9	2	Star on bottom; partial text "s Meeus ...vers"
5	C	Glass	Green glass bottle bottoms	Bottle	1703.1	18	Checkerboard on bottom
5	C	Glass	Green glass bottle bottoms	Bottle	812.8	8	Three dots on bottom; 2 pieces have partial "Blankenheym & Nolet"
5	C	Glass	Green glass bottle bottom	Bottle	26.4	1	"8" on bottom
5	C	Glass	Glass pieces - various		33.4	22	Green, lavender clear bits
5	C	Glass	Dark Green Glass	Bottle	516.9	25	Bottle Fragment
5	C	Glass	Green Glass	Bottle	247.1	1	Bottom piece came from 5C, reconstructed with side piece from 11C
5	C	Glass	Green Glass	Bottle	1900.9	Many	Case bottle Shoulders
5	C	Glass	Green Glass	Bottle	2695	Many	Case Bottle Sides
5	C	Glass	Green Glass	Bottle	2686.5	Many	Case Bottle Sides
5	C	Glass	Green Glass	Fragment	18.5	8	
5	C	Glass	Clear Glass	Fragment	10.5	1	
5	C	Metal	Metal Fragments		130	42	
5	C	Metal	Misc metal fragments		2.5	2	Rusted metal pieces, part of can?
5	C	Pottery	Brown earthenware pottery		49.3	1	
5	C	Shell	Shells	Fragment	15.5	2	
5	D	Ceramics	White pottery fragments		39.8	7	
5	D	Ceramics	Ceramics with blue design		3.6	4	Blue decoration on pottery
5	D	Ceramics	White pottery with red trim		5.2	1	Red trim around rim
5	D	Ceramics	White pottery with brown trim		2.4	1	Brown trim around rim
5	D	Ceramics	White pottery with green décor		14.4	1	Green decoration painted on piece
5	D	Glass	Clear Glass	Bottle	44.5		Clear/blue bottle
5	D	Glass	Green Glass	Bottle	208	27	One Bottle Neck, and various pieces
5	D	Glass	Green Glass	Bottle	76.6	1	Case Bottle Bottoms
5	D	Glass	Milky White Glass		1	1	

Square	Section	Item	Description	2nd Description	Weight In Grams	Pieces	Notes
5	D	Glass	Green Glass	Bottle	360.9	1	Case Bottle Bottom, Double Rectangle on bottom
5	D	Metal	Large Metal Peg		685.2	1	Lighting Rod
5	D	Metal	Metal Fragments		1064.6		Large Metal Fragments
5	D	Metal	Metal Fragments		391		
5	D	Pipe	Pipe Stems		25	4	Pipe Stems
5	D	Plaster	Plaster	Wall frag	467.5		
5	D	Shell	Shells	Fragment	15.8	1	
5	D	Slate	Slate fragmemnt		24	1	
5	D	Stoneware	Stoneware		19.8	2	Possible rum bottle fragments
6	A	Brick	Red brick		544.4		
6	A	Glass	Green Glass	Bottle	413.7	3	Case Bottle Bottom, partial written in script Blankenheym & Nolet, on other side symbol of key, Single dot on bottom
6	A	Glass	Thin Clear Glass		76	58	
6	A	Glass	White Glass		5.6	1	Base Square
6	A	Glass	Green Glass	Bottle	580	1	Bottle Bottom, C 8 5 witten on bottom
6	A	Shell	Shells	Fragment	0.7	1	
6	B	Ceramics	White Ceramics		37.5	8	
6	B	Ceramics	White Ceramics		2.1	2	
6	B	Glass	Green Glass	Bottle	590.1	6	Case Bottle Bottoms
6	B	Glass	Green Glass	Bottle	315.6	25	Bottle Fragments
6	B	Glass	Green Glass	Bottle	299.5	7	Case bottle, 5 tops and 2 bases
6	B	Glass	Green Glass	Bottle	909	79	Case Bottle sides Fragments
6	B	Glass	Thin Clear Glass		146.7	107	
6	B	Metal	Metal Fragments		30		
6	B	Shell	Shells	Fragment	17.8	1	
6	C	Ceramics	Glazed Ceramic	Fragment	20.6	1	Blue Decoration on Trim
6	C	Copper	Copper	Fragment	59.5	1	
6	C	Glass	Blue/Green Glass	Bottle	492.9	26	Bottle Pieces
6	C	Glass	Blue/Green Glass	Bottle	254	1	Bottle Bottom Partial on bottom G Co 5
6	C	Glass	Dark Green Glass	Bottle	377	24	Bottle pieces
6	C	Glass	Dark Green Glass	Bottle	235	6	Bottle Glass
6	C	Glass	Green Glass	Bottle	291.7	7	Bottle Tops
6	C	Glass	Green Glass	Bottle	158.3	2	Case Bottle Bottom
6	C	Glass	Green Glass	Bottle	109.7	32	Bottle Fragments
6	C	Glass	Green Glass	Bottle	144.6	2	Case Bottle Bottoms
6	C	Glass	Green Glass	Bottle	720	41	Case Bottle sides Fragments
6	C	Glass	Green Glass	Bottle	190	14	Bottle Glass
6	C	Glass	Green Glass	Bottle	190	15	Bottle Glass Fragments
6	C	Glass	Thin Clear Glass		166.2	135	
6	C	Glass	Green Glass		353.6	60	Bottle Fragment
6	C	Glass	Milky White Glass	Fragment	2.9	1	
6	C	Metal	Metal Fragments		192.4		
6	D	Charcoal	Charcoal		9.3	4	
6	D	Glass	Blue/Green Glass	Bottle	127.4	3	Bottle Pieces

Square	Section	Item	Description	2nd Description	Weight In Grams	Pieces	Notes
6	D	Glass	Clear Glass		173.6		
6	D	Glass	Dark Green Glass	Bottle	89.6	13	Bottle pieces
6	D	Glass	Green Glass	Bottle	146.4	7	Case side labels, (partial) ankenhym & Nolet
6	D	Glass	Green Glass	Bottle	161.7	2	Case Bottle Bottom
6	D	Glass	Green Glass	Bottle	100.4	6	Bottle Pieces
6	D	Glass	Green Glass	Bottle	685	111	Case Bottle Sides Fragments
6	D	Glass	Milky White Glass		3.5	1	
6	D	Glass	Green Glass		388	1	Whole bottle, 18 on bottom
6	D	Glass	Green Glass		382.7	1	Whole bottle, "This bottle made in Scotland" on bottom
6	D	Glass	Green Glass		390.3	1	Whole bottle, 10 on bottom
6	D	Glass	Green Glass		426.3	1	Whole bottle, 324 FCC X 3 on bottom
6	D	Glass	Light Blue Glass	Bottle	3.5	1	Bottle Base
6	D	Metal	Metal Fragments		360.4	3	Rims from Can
6	D	Metal	Metal Fragments		31.4		
7	A	Glass	Clear Glass		72.9		
7	A	Glass	Green Glass		433.6	1	Whole bottle, concave bottom
7	B	Ceramics	Glazed Ceramic		241.7	1	Plate, not whole, reconstructed, on bottom Adams Tunstall, picture of a stag, also says trademark
7	B	Glass	Dark Green Glass	Bottle	221	3	Bottle Glass, Kick Bottom
7	B	Glass	Dark Green Glass	Bottle	221	3	Round Bottle Bottom Kick Bottom
7	B	Glass	Thin Clear Glass		71.6	14	
7	B	Glass	Green Glass	Bottle	Over 610 Grams	1	Bottle whole, Blankenhym & Nolet in script with curve at top of bottle, key logo on side, clear rectangle bottom
7	B	Shell	Cittarium Pica		4.8	1	Fragment
7	C	Glass	Green Glass	Bottle	67	6	Bottle Pieces
7	C	Glass	Thin Clear Glass		402.3	109	
7	D	Glass	Thin Clear Glass		410.4		
7	D	Glass	Green Glass		191.6	9	
7	D	Glass	Green Glass		6.8	1	Bottle Bottom
7	D	Glass	Clear Glass	Bottle	Over 610 Grams	1	Bottle, Whole, Burrough's London Gin, Screw cap
7	D	Metal	Metal Fragments		22.8		
7	D	Misc	Misc glass/plastic/pottery		16.5	3	2 pcs misc glass, one piece stoneware
7	D	Shell	Shells		15	5	West Indian Top Shell 1, Cittarium Pica 2, 2 ocean shells
8	A	Glass	Green Glass	Bottle	100.1	3	Bottle Pieces
8	B	Ceramics	Glazed Ceramic		36.3	2	White Glaze
8	B	Ceramics	Glazed Ceramic		4.6	1	Maroon Desgin on piece
8	B	Glass	Clear Glass		69.1		
8	B	Glass	Clear Glass		172.8		
8	B	Glass	Green Glass	Bottle	62	5	Bottle Glass
8	B	Glass	Green Glass	Bottle	62	5	Bottle Glass Pieces
8	B	Glass	Green Glass	Bottle	392.1	1	Beer Bottle, U * on bottom of bottle
8	B	Stoneware	Ginger Beer Bottle	Bottle	400.7	1	Ginger Beer Bottle
8	C	Glass	Clear Glass		119.2		

Square	Section	Item	Description	2nd Description	Weight In Grams	Pieces	Notes
8	C	Glass	Green Glass	Bottle	58	1	Case Gin Bottle Top
8	C	Glass	Green Glass	Bottle	155.3	2	Case Gin Bottle Bottom
8	C	Metal	Metal Fragments		11.2		
8	D	Brick	Red brick		89.8		
8	D	Glass	Dark Green Glass	Bottle	32	2	Case Bottle Pieces
8	D	Glass	Green Glass	Bottle	180.6	1	Case Bottle Bottom, partial written in print, Blankenheym & Nolet, single dot with circiel around it on bottom
8	D	Glass	Glazed Glass		18.7	1	Base Bottle
8	D	Glass	Green Glass	Neck	16.8	1	
8	D	Shell	Shells	Fragment	13.5	5	
9	A	Ceramics	Glazed Ceramic	Soup Dish	278.8	2	Soup Dish
9	A	Metal	Metal Fragments		9.5		
9	A	Pottery	Bottle	Bottle	395.4	1	Gingerbeer Bottle Bottom, inside is a coil design, stamp - port- Dundas pottery co Glassgow
9	A	Pottery	Bottle	Bottle	337.8	1	Bottle Bottom, Stamp - Port-Dundas Glasgow Pottery Co.
9	B	Glass	Thin Clear Glass		187.5		
9	C	Brick	Red brick		395.3		
9	C	Ceramic	Purple Ceramic		2.4	1	
9	C	Ceramic	White Ceramic		2.6	2	White
9	C	Glass	Clear Glass		518.6		
9	C	Glass	Dark Green Glass	Bottle	772	8	Bottle Pieces
9	C	Glass	Green Glass	Bottle	336	7	Bottle Tops
9	C	Glass	Green Glass	Bottle	192.5	3	Bottle Tops
9	C	Glass	Green Glass	Bottle	312.3	5	Bottle Tops
9	C	Glass	Green Glass	Bottle	448	11	Bottle Tops
9	C	Glass	Green Glass	Bottle	232.4	1	Gin Bottle Case bottom with partial writing Hoytema
9	C	Glass	Green Glass	Bottle	451.5	2	Green Bottle Top & Base
9	C	Glass	Green Glass	Bottle	350	1	Case Bottle Bottom, partial Hoytena(e) C.
9	C	Glass	Green Glass	Bottle	371.8	33	Case Gin Bottle Fragments
9	C	Glass	Green Glass	Bottle	294	1	Round Bottle Bottom
9	C	Glass	Green Glass	Bottle	287.5	2	Round Bottle Bottom, Kick up bottom
9	C	Glass	Green Glass	Bottle	69.8	2	Bottle Glass Label Sides B & N
9	C	Glass	Green Glass	Bottle	118	3	Bottle Glass Label Sides Hoy
9	C	Glass	Green Glass	Bottle	876.7		Case Bottle Necks
9	C	Glass	Green Glass	Bottle	1907.6		Case Bottle Sides
9	C	Glass	Green Glass	Bottle	2450.6		Case Bottle Sides
9	C	Glass	Light Green Glass	Bottle	138.5	3	Bottle Tops
9	C	Glass	Light Green Glass	Bottle	320.5	25	Bottle pieces
9	C	Glass	Green Glass	Bottle	502	1	Bottle, Whole, Checkerboard bottom
9	C	Glass	Green Glass	Bottle	Over 610 Grams	1	Bottle, missing top, Beveled corners, all sides striated
9	C	Glass	Green Glass	Bottle	489.3	1	Bottle, Whole, X on bottom
9	C	Glass	Green Glass	Bottle	471	1	Bottle, Whole, Bottom Deeply Depressed with dot in center. No
9	C	Glass	Green Glass	Gin bottle	410.8	9	Unidentifiable bottom fragments

Square	Section	Item	Description	2nd Description	Weight In Grams	Pieces	Notes
9	C	Glass	Green Glass	Gin bottle	256.8	1	Bottom fragment, Zero on bottom
9	C	Glass	Green Glass	Gin bottle	170.5	3	Bottom fragment, two circles on bottom
9	C	Glass	Green Glass	Gin bottle	250.7	2	Bottom fragment, 13 on bottom
9	C	Glass	Green Glass	Gin bottle	808.9	5	Bottom fragment, nothing on bottom
9	C	Glass	Green Glass	Gin bottle	70	1	Bottom fragment, X on bottom
9	C	Glass	Green Glass	Gin bottle	239.6	2	Bottom fragment, three dots on diag
9	C	Glass	Green Glass	Gin bottle	236.4	1	Bottom fragment, 8 on bottom
9	C	Glass	Green Glass	Gin bottle	320	2	Bottom fragment, circle & dot on bottom
9	C	Glass	Green Glass	Gin bottle	91.7	2	Bottom fragment, 27 on bottom
9	C	Glass	Green Glass	Gin bottle	261.7	3	Bottom fragment, dot on bottom
9	C	Glass	Green Glass	Gin bottle	2620.6	15	Bottom fragment, checkerboard w/circle in the middle
9	C	Glass	Green Glass	Gin bottle	76.6	1	Bottle Bottom, Checkerboard with Cross in the middle
9	C	Glass	Green Glass	Gin bottle	834.3	5	Bottle Bottom, Checkerboard no markings in center
9	C	Metal	Metal Fragments		10		
9	C	Pottery	Bottle	Bottle	595.7	1	Ginger Beer Bottle, Whole
9	C	Shell	Shells		151.7	1	Indian Top Shell
9	D	Ceramics	Glazed Ceramic	Fragment	1.1	1	Blue Decoration
9	D	Glass	Bottle	Bottle	591.5	1	Ginger Beer Bottle, Murray and Company
9	D	Glass	Clear Glass		105.6		
9	D	Glass	Dark Green Glass	Bottle	388.3	7	pieces, bottle bottom is concave with 2 circle design
9	D	Glass	Dark Green Glass	Bottle	688	102	Case Gin Bottle Fragments
9	D	Glass	Green Glass	Bottle	187.4	5	Bottle Tops
9	D	Glass	Green Glass	Bottle	453.5	61	Bottle pieces
9	D	Glass	Green Glass	Bottle	1295.8	7	Case Bottle Bottoms
9	D	Metal	Metal Fragments		549.7		
9	D	Pottery	Bottle	Bottle	591.5	1	Gingerbeer Bottle, Neck is broken off - Stamp - Murray & Co 1 Glasgow
9	D	Pottery	Bottle	Bottle	586	1	Gingerbeer Bottle, Stamp - Kennedy (partial) field 84 Pottery, Glasgow
9	D	Pottery	Stoneware bottle	Bottle	598.55	1	Bottle, White, no stamp, missing neck
9	D	Shell	Shells	Fragment	10.8	1	
10	C	Ceramics	white glazed cereamic		10.8	1	
10	C	Ceramics	white cermamic		2.2	1	
10	C	Ceramics	Glazed Ceramic	Fragment	23.6	6	White Glaze
10	C	Glass	Thin Clear Glass		50.7		
10	C	Glass	Thin Clear Glass		111.9		
10	C	Glass	Dark Green Glass	Bottle	156.7	4	Bottle Tops
10	C	Glass	Green Glass	Bottle	119.6	22	Gin Bottle Necks
10	C	Glass	Green Glass	Bottle	586.5	79	Gin bottle Sides
10	C	Glass	Green Glass	Bottle	17.5	4	Label Hoy
10	C	Glass	Green Glass	Bottle	85.6	12	Bottle pieces

Square	Section	Item	Description	2nd Description	Weight In Grams	Pieces	Notes
10	C	Glass	Green Glass	Bottle	79	1	Gin Bottle Bottom, Checkerboard Bottom
10	C	Glass	Green Glass	Bottle	480.9	1	Bottle missing top, no name checkerboard bottom, with a cross in the center square, possible B & N
10	C	Metal	Metal Fragments		12	2	
10	C	Metal	Metal Fragments		50.9		
10	C	Pipe	Pipe Stems		2.6		
10	C	Pottery	Indian Pottery		20.3	6	Fragment
10	C	Shell	Shells		40	4	West Indian Top Shell 2, Nerites 2, Broken Piece of Conch
10	D	Brick	Red brick		104.9		
10	D	Ceramics	Glazed Ceramic	Fragment	10	2	Green decoration painted on piece
10	D	Glass	Clear Glass		49	16	Fragments
10	D	Glass	Green Glass	Bottle	57.9	5	Gin Bottle Necks
10	D	Glass	Green Glass	Bottle	148.5	3	Bottle Tops
10	D	Glass	Green Glass	Bottle	162.3	6	Bottle
10	D	Glass	Green Glass	Bottle	513.5	34	Gin bottle Sides
10	D	Glass	Green Glass	Bottle	70.6	1	Bottle Side, label B & N
10	D	Glass	Green Glass	Bottle	338.5	1	Case Bottle Bottom, partial written in print, Blankenheym & Nolet, single dot on bottom
10	D	Pipe	Pipe/Pipe Stems		50.3	5	Two say "E. Church, London", one says "Baltic"
10	D	Stoneware	Stoneware	Bottle	105.5	1	Fragment Dutch Gin Bottle, Coil desgin
10	D	Stoneware	Stoneware	Bottle	38.6	1	Fragment, Ginger beer bottle
11	C	Ceramics	Glazed Ceramic	Fragment	1.7	1	White Glaze
11	C	Glass	Green Glass	Bottle	65.9	1	6 Sided piece
11	C	Glass	Green Glass	Bottle	25.8	1	Bottle Tops
11	C	Glass	Green Glass	Bottle	471	22	Bottle pieces, Kick up bottom
11	C	Glass	Green Glass		81.2	2	Bottle Fragment
11	C	Glass	Green Glass	Bottle	See Notes	0	Bottom piece came from 5C, reconstructed with side piece from 11C
11	C	Glass	Green Glass	Large bottle	1356.6		
11	C	Pottery	Bottle	Bottle	330.5	2	Bottle bottom and Neck, Stamp H. Kennedy barrowfield 34 pottery glasgow
11	C	Pottery	Indian Pottery		58.4	7	Some pieces with decorations, one with adorno
11	C	Shell	Shells	Fragment	7.9	2	
11	C	Stoneware	Stoneware	Bottle	155.5	5	Bottle
11	D	Glass	Thin Clear Glass		33.4		.
O1	A	Glass	Blue/Green Glass	Bottle	102.5	1	bottle Bottom, beautiful branch design with fruit at bottom of bottle
O1	A	Glass	Green Glass	Fragment	7.8	1	Fragment
O1	B	Bottle	Blue/Green Glass	Bottle	285.8	1	Missing bottom, Round Bottle
O1	C	Shell	Shells	Fragment	119.5	15	

Square	Section	Item	Description	2nd Description	Weight In Grams	Pieces	Notes
O1	D	Glass	Brown Glass	Bottle	1126	1	Clorox Bleach Bottle 1 Gallon, 9 51 on bottom, pat us
O2	D	Glass	Green Glass	Bottle	596.4	1	Bottle missing top, Blankenhym & Nolet in script, key logo on side, clear circile bottom